

**MANDATORY DISCLOSURE
2026-2027**



Submitted by

Udaya School of Engineering

Udaya Nagar, Vellamadi, Ammandivilai Post,
Kanyakumari Dist, Tamil Nadu– 629 204

Contents

Sl.No	Particulars
I	Name of the Institution
II	Name & Address of the Director
III	Name of the Affiliating University
IV	Governance:
	* Governing Body
	* Academic Advisory Body
	* Details of body meetings
	* Organizational Chart
V	* Name of the Programmes approved by AICTE
	* Name of the Programmes accredited by AICTE
	* Details of Programmes
VI	Faculty:
	* Branch Wise faculty members
	* Number of faculty employed and left during the last three years
VII	* Profile of principal and faculties
VIII	* Details of fee as approved by state fee committee
	* Scholarship details
	* Hostel fee details
IX	Admission:
	* No of seats sanctioned
	* No of students admitted
	* No of applications received during last two years for admission
X	Admission procedure
XI	Criteria and Weight ages for Admission
XII	Results of admission under Management seats / Vacant Seats
XIII	Information on Infrastructure and other Resources available
	* Library
XIV	Details of existing faculty members

MANDATORY DISCLOSURE

I. Name of the Institution : **UDAYA SCHOOL OF ENGINEERING**
UDAYA NAGAR, VELLAMADI,
AMMANDIVILAI POST – 629204,
KANYAKUMARI DISTRICT.

Telephone Number : 04651-239900, 239901

Fax Number : 04651-239903

E-mail : 978udayaengineering@gmail.com

**II. Name and address of
the Principal** : **Dr.S.Jothibas,**
Udaya School of Engineering,
Udaya Nagar, Vellamadi,
Ammandivilai Post – 629204,
Kanyakumari District.

Telephone Number : 04651-239900, 239901

Fax Number : 04651-239903

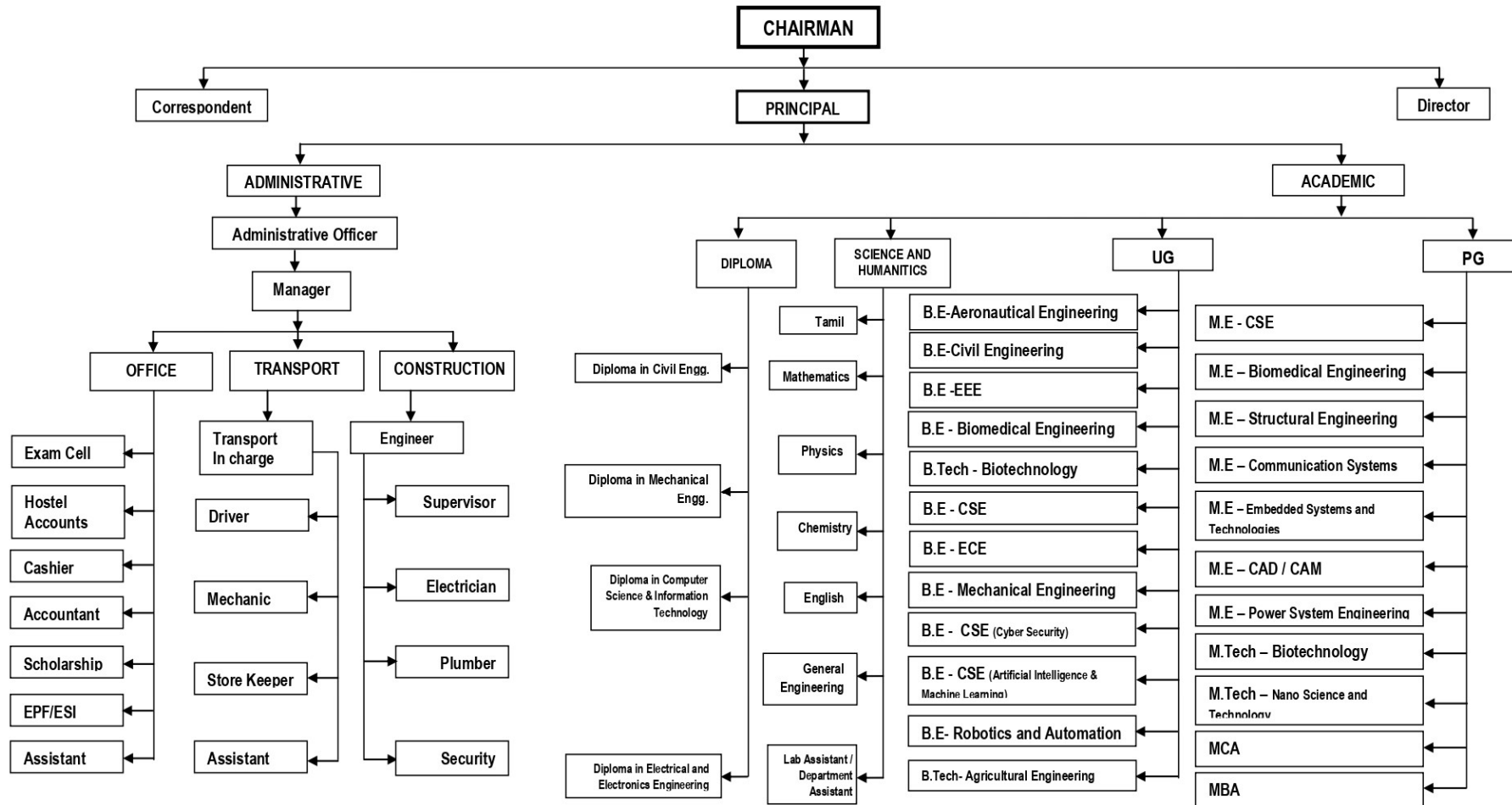
E-mail : udayajbonline@gmail.com

**III. Name of the Affiliating
University** : **Anna University, Chennai**

UDAYA SCHOOL OF ENGINEERING

Udaya Nagar, Vellamadi Junction
Ammandivilai, Kanyakumari District – 629204

ORGANIZATIONAL CHART



IV. GOVERNANCE:

Sl.No	Name	Designation	Phone Number	Email ID
1.	Er.C.Thayaparan	Chairman	9443358902	<u>udayachairman@gmail.com</u>
2.	Dr. A. C. T. Arjun Singh	Member	8903603699	<u>arjunsinghthayaparan@gmail.com</u>
3.	Ms.A.C.T.Udaya	Member	7708282172	<u>978udayaengineering@gmail.com</u>
4.	Mrs. Parvathy	Member	9281090006	<u>978udayaengineering@gmail.com</u>

V. PROGRAMMES

- Name of the Programmes approved by the AICTE

Sl.No	Name of the Programmes approved by AICTE	Number of Seats	Duration
1.	B.E - Bio-Medical Engineering	60	4-years
2.	B.E - Electrical and Electronics Engineering	30	4-years
3.	B.E - Electronics and Communication Engineering	60	4-years
4.	B.E - Computer Science and Engineering	60	4-years
5.	B.E - Computer Science and Engineering (Artificial Intelligence and Machine Learning)	60	4-years
6.	B.E - Computer Science and Engineering (Cyber Security)	60	4-years
7.	B.E – Robotics and Automation	30	4-years
8.	B.E - Mechanical Engineering	90	4-years
9.	B.E- Civil Engineering	60	4-years
10.	B.E- Aeronautical Engineering	30	4-years
11.	B.Tech - Bio-Technology	60	4-years
12.	B.Tech – Agricultural Engineering	60	4-years
13.	M.E - Embedded Systems	18	2-years
14.	M.E – CAD / CAM	18	2-years
15.	M.E – Computer Science and Engineering	18	2-years
16.	M.E – Biomedical Engineering	24	2-years
17.	M.E – Power Systems Engineering	18	2-years
18.	M.E – Communications Engineering	12	2-years
19.	M.E – Structural Engineering	24	2-years
20.	M.Tech – Biotechnology	18	2-years
21.	M.Tech – Nano Science and Technology	12	2-years
22.	Master of Computer Applications	120	2-years
23.	Master of Business Administration	120	2-years

24.	Dip.in Mechanical Engineering	60	3 – Years
25.	Dip.in Civil Engineering	30	3 – Years
26.	Dip.in Electrical and Electronics Engineering	60	3 – Years
27.	Dip.in Computer Science and Information Technology	60	3 – Years
28.	Dip.in Biomedical Engineering	30	3 – Years
29.	Dip.in Agricultural Engineering	30	3 – Years
30.	Dip.in 3-d Animation and Graphics	30	3 – Years
31.	Dip.in Technician X-ray Technology	30	3 – Years
32.	Dip.in Medical Laboratory Technology	60	3 – Years
33.	Dip.in Fashion Technology	30	3 – Years
34.	Dip.in Automobile Engineering	30	3 – Years
35.	Dip.in Petrochemical Engineering	30	3 – Years
36.	Dip.in Marine Engineering	30	3 – Years
37.	Dip.in Chemical Engineering	30	3 – Years

- **Name of the Programmes accredited by the AICTE**

Not Applicable

- **Cut off mark / Rank for Admission during the last three years**

Year: 2024-2025:

S.No	Course	Max cut off (200)	Min cut off
1	B.E - Bio-Medical Engineering	180.00	122.00
2	B.Tech - Bio-Technology	185.00	105.00
3	B.E - Electrical and Electronics Engineering	150.00	105.00
4	B.E - Electronics and Communication Engineering	120.00	90.00
5	B.E - Computer science and Engineering	195.00	140.00
6	B.E - Mechanical Engineering	175.00	98.00
7	B.E- Civil Engineering	150.00	95.00

8	B.E- Aeronautical Engineering	145.00	122.00
9	B.Tech –Agricultural Engineering	141.00	120.00
10	B.E - Computer science and Engineering (Artificial Intelligence and Machine Learning)	152.00	119.00
11	B.E - Computer science and Engineering (Cyber Security)	147.00	118.00
12	B.E – Robotics and Automation	146.00	115.00

Year: 2023-2024:

S.No	Course	Max cut off (200)	Min cut off
1	B.E - Bio-Medical Engineering	180.00	120.00
2	B.Tech - Bio-Technology	185.00	115.00
3	B.E - Electrical and Electronics Engineering	150.00	100.00
4	B.E - Electronics and Communication Engineering	120.00	85.00
5	B.E - Computer science and Engineering	195.00	130.00
6	B.E - Mechanical Engineering	175.00	92.00
7	B.E- Civil Engineering	150.00	93.00
8	B.E- Aeronautical Engineering	145.00	120.00
9	B.Tech –Agricultural Engineering	141.00	110.00
10	B.E - Computer science and Engineering (Artificial Intelligence and Machine Learning)	152.00	120.00
11	B.E - Computer science and Engineering (Cyber Security)	147.00	115.00
12	B.E – Robotics and Automation	146.00	118.00

Year: 2022-2023

S.No	Course	Max cut off (200)	Min cut off
1	B.E - Bio-Medical Engineering	180.50	120.00
2	B.Tech - Bio-Technology	185.50	115.00
3	B.E - Electrical and Electronics Engineering	150.50	100.00
4	B.E - Electronics and Communication Engineering	120.50	85.25

5	B.E - Computer science and Engineering	195.60	105.50
6	B.E - Mechanical Engineering	175.50	92.00
7	B.E- Civil Engineering	150.00	93.00
8	B.E- Aeronautical Engineering	145.00	120.00
9	B.Tech –Agricultural Engineering	140.00	110.00
10	B.E - Computer science and Engineering (Artificial Intelligence and Machine Learning)	150.00	120.00
11	B.E - Computer science and Engineering (Cyber Security)	145.00	115.00
12	B.E – Robotics and Automation	147.00	118.00

*As applicable by Tamil Nadu Government

Campus placement in last 4 years

S.No.	Year	Name of the Company/Industry	Number of Students Placed
1	2022	Elim Mediatech Pvt Ltd	18
		Thoppil Constructors India Pvt.Ltd	22
		Maathangi Info Research Solutions Private	31
		Thai Plastic Private Limited	19
		Sea Sense Technologies	35
		Cogent E-Service Limited	26
		EDUREKA	30
		Resbee Info Technologies Pvt.Ltd	35
		Nubizuez Private Limited	32
		NIMS Health Care	40
2	2023	Elim Mediatech Pvt Ltd	18
		Thoppil Constructors India Pvt.Ltd	22
		Maathangi Info Research Solutions Private	31
		Thai Plastic Private Limited	19
		Sea Sense Technologies	35
		Cogent E-Service Limited	26
		EDUREKA	30
		Resbee Info Technologies Pvt.Ltd	35
		Nubizuez Private Limited	32
		NIMS Health Care	40
3	2024	Seventh Sense, Bangalore	29
		Finura Biotek	31
		BDM Technologies	25
		Nubizuez Private Limited	45
		Kriya Informatics	25
		NCR Corporation Private Limited, Chennai	40
		Shakthi Components, Melmaruvathur	36
		Cafoma	28
		Accomune Tech, Private Limited, Coimbatore	39
		Tango IT Solutions, Chennai	26
		NxtSync Private Limited, Hyderabad	43
		Femtosoft Technologies, Chennai	32
		Placemantra Private Limited	25
CEAT Tyre, Chennai	35		
4	2025	Darrels AM Research and Reverse Engineering	55
		Prospiders , Chennai	53
		Pentagon – Bangalore	12
		Clovion Tech Solutions	13
		Inspire AI Bangalore	17

	Sensense Software Private Limited	25
	Seventh Sense, Bangalore	59
	Finura Biotek	71
	BDM Technologies	55
	Nubizuez Private Limited	43
	Kriya Informatics	32
	NCR Corporation Private Limited, Chennai	72
	Shakthi Components, Melmaruvathur	61
	Cafoma	12
	Accomune Tech, Private Limited, Coimbatore	49
	Tango IT Solutions, Chennai	55
	NxtSync Private Limited, Hyderabad	60
	Femtosoft Technologies, Chennai	25
	Placemantra Private Limited	32
	CEAT Tyre, Chennai	60
	Kriya informatics	23

- **Collaboration with Foreign University**

Nil

Course wise number of students admitted in the previous year

S.No	Course(s)	AICTE Approved Intake for 2024-2025	Actual number of students admitted for 2024-2025
1	B.E- Aeronautical Engineering	30	10
2	B.E - Biomedical Engineering	60	58
3	B.E - Electrical and Electronics Engineering	60	14
4	B.E - Electronics and Communication Engineering	30	11
5	B.E - Mechanical Engineering	90	23
6	B.E- Civil Engineering	60	13
7	B.E - Computer Science and Engineering	60	60
8	B.E – Computer Science and Engineering (Artificial Intelligence & Machine Learning)	30	53
9	B.E – Computer Science and Engineering (Cyber Security)	60	26
10	B.E – Robotics and Automation	30	1

11	B.Tech - Biotechnology	60	41
12	B.Tech – Agricultural Engineering	60	23
13	M.E - Embedded System Technologies	18	7
14	M.E – CAD / CAM	18	4
15	M.E – Computer Science and Engineering	18	13
16	M.E – Biomedical Engineering	24	24
17	M.E – Power Systems Engineering	18	4
18	M.E – Communication Engineering	12	5
19	M.E – Structural Engineering	24	24
20	M.Tech – Biotechnology	18	18
21	M.Tech – Nano Science and Technology	12	2
22	MCA - Master of Computer Applications	120	48
23	MBA - Master of Business Administration	120	101
24	Diploma in Civil Engineering	60	10
25	Diploma in Mechanical Engineering	60	30
26	Diploma in Computer Science and Information Technology	60	25
27	Diploma in Electrical and Electronics Engineering	60	21

Branch wise List of Faculty Members:

S.No	Department	Total number of faculty
1	B.E - Biomedical Engineering	9
2	B.Tech - Biotechnology	9
3	B.E - Electrical and Electronics Engineering	9
4	B.E - Electronics and Communication Engineering	6
5	B.E - Computer Science and Engineering	9
6	B.E - Mechanical Engineering	18
7	B.E- Civil Engineering	9

8	B.E- Aeronautical Engineering	6
9	B.E – Artificial Intelligence & Machine Learning)	9
10	B.E – Cyber Security	9
11	B.E – Robotics and Automation	6
12	B.Tech – Agricultural Engineering	9
13	M.E - Embedded Systems	3
14	M.E – CAD / CAM	3
15	M.E – Computer Science and Engineering	4
16	M.E – Biomedical Engineering	4
17	M.E – Power Systems Engineering	3
18	M.Tech – Biotechnology	3
19	M.Tech – Nano Science and Technology	2
20	M.E – Communication Engineering	2
21	M.E – Structural Engineering	4
22	MCA - Master of Computer Applications	13
23	MBA - Master of Business Administration	12
24	Humanities & Social Sciences (Including physical director and librarian)	40
25	Diploma in Civil Engineering	6
26	Diploma in Mechanical Engineering	6
27	Diploma in Computer Science and Information Technology	6
28	Diploma in Electrical and Electronics Engineering	6

*** Number of Faculty employed and left during the last three years**

Sl.No	Number of faculty Employed	Left during last three years
1.	235	55

VIII FEE:

Details of Fee Approved by State Committee	Through counseling	Rs. 50000/-
	Through management quota	Rs. 50000/-
Boarding and Lodging Fee	Admission- Mess Charges Electricity Charges Room Rent	Rs. 4000/- Rs. 25000/- Rs.6000/- Rs.15000/-
	Total	Rs. 50000/-

*** Scholarship Details**

Year	Total No of Students	Categories				
		Minority	BC / MBC/DNC	First Graduate	SC/SCC/ST	7.5 % Quota
2003-2004	18	-	11	7	-	-
2004-2005	38	-	23	15	-	-
2005-2006	70	-	44	26	-	-
2006-2007	70	-	38	32	-	-
2007-2008	109	-	56	53	-	-
2008-2009	252	14	114	103	21	-
2009-2010	378	33	175	153	17	-
2010-2011	336	41	162	117	16	-
2011-2012	388	3	236	135	14	-
2012-2013	578	20	373	160	25	-
2013-2014	586	33	307	211	35	-
2014-2015	522	52	222	215	33	-
2015-2016	378	27	163	163	25	-
2016-2017	314	9	98	145	62	-
2017-2018	461	13	168	141	136	-
2018-2019	391	6	106	23	256	-
2019-2020	427	21	98	21	287	-
2020-2021	518	0	111	124	359	0
2021-2022	768	5	128	238	469	14
2022-2023	908	-	157	290	421	40
2023-2024	1047	-	200	329	449	69
2024-2025	1124	-	191	322	520	91

IX. ADMISSION

- Number of Seats sanctioned with the year of approval

Sl.No	Year	Branch	No of Seats Sanctioned
1.	2002-2003	B.E – Electronics and Communication Engineering	60
		B.E – Instrumentation and Control Engineering	60
		B.Tech – Industrial Biotechnology	60
2.	2003-2004	B.E – Electronics and Communication Engineering	60
		B.E – Instrumentation and Control Engineering	60
		B.Tech – Industrial Biotechnology	60
3.	2004-2005	B.E – Electronics and Communication Engineering	60
		B.E – Instrumentation and Control Engineering	60
		B.Tech – Industrial Biotechnology	60
4.	2005-2006	B.E – Electronics and Communication Engineering	60
		B.E – Instrumentation and Control Engineering	60
		B.Tech – Industrial Biotechnology	60
		B.E – Electrical and Electronics Engineering	60
		B.E – Biomedical Engineering	60
		B.E – Mechanical Engineering	60
5	2006-2007	MCA – Master of Computer Applications	60
		B.E – Electronics and Communication Engineering	120
		B.E – Computer Science and Engineering	60
		B.Tech – Biotechnology	60
		B.E – Electrical and Electronics Engineering	60
		B.E – Biomedical Engineering	60
		B.E – Mechanical Engineering	60
		MBA – Master of Business Administration	60
6	2007-2008	MBA – Master of Business Administration	60
		B.E – Electronics and Communication Engineering	120
		B.E – Computer Science and Engineering	60
		B.Tech – Biotechnology	60
		B.E – Electrical and Electronics Engineering	60
		B.E – Biomedical Engineering	60
		B.E – Mechanical Engineering	60
		MCA – Master of Computer Applications	60

7	2008-2009	B.E – Electronics and Communication Engineering	120
		B.E – Computer Science and Engineering	60
		B.Tech – Biotechnology	60
		B.E – Electrical and Electronics Engineering	60
		B.E – Biomedical Engineering	60
		B.E – Mechanical Engineering	60
		M.E – Embedded Systems	18
		M.Tech – Biotechnology	18
		MCA – Master of Computer Applications	60
		MBA – Master of Business Administration	60
8	2009-2010	B.E – Electronics and Communication Engineering	120
		B.E – Computer Science and Engineering	60
		B.Tech – Biotechnology	60
		B.E – Electrical and Electronics Engineering	60
		B.E – Biomedical Engineering	60
		B.E – Mechanical Engineering	60
		M.E – Embedded Systems	18
		M.Tech – Biotechnology	18
		MCA – Master of Computer Applications	60
		MBA – Master of Business Administration	60
9.	2010-2011	B.E – Electronics and Communication Engineering	120
		B.E – Computer Science and Engineering	60
		B.Tech – Biotechnology	60
		B.E – Electrical and Electronics Engineering	60
		B.E – Biomedical Engineering	60
		B.E – Mechanical Engineering	60
		M.E – Embedded Systems	18
		M.Tech – Biotechnology	18
		MCA – Master of Computer Applications	60
		MBA – Master of Business Administration	60
10.	2011-2012	B.E – Bio-Medical Engineering	60
		B.Tech – Bio-Technology	60
		B.E – Electrical and Electronics Engineering	60
		B.E – Electronics and Communication Engineering	120
		B.E – Computer science and Engineering	60
		B.E – Mechanical Engineering	120
		B.E- Civil Engineering	60
		M.E – Embedded Systems	18
		M.E – CAD / CAM	18
		M.E – Computer Science and Engineering	18
		M.E – Biomedical Engineering	18
		M.Tech – Biotechnology	18
		M.Tech – Nano Science and Technology	18
MCA – Master of Computer Applications	60		

		MBA – Master of Business Administration	60
11.	2012-2013	B.E – Biomedical Engineering	60
		B.Tech – Bio-Technology	60
		B.E – Electrical and Electronics Engineering	60
		B.E – Electronics and Communication Engineering	120
		B.E – Computer science and Engineering	60
		B.E – Mechanical Engineering	120
		B.E- Civil Engineering	60
		B.E- Aeronautical Engineering	60
		M.E – Embedded Systems	18
		M.E – CAD / CAM	18
		M.E – Computer Science and Engineering	18
		M.E – Biomedical Engineering	18
		M.E – Power Systems Engineering	18
		M.Tech – Biotechnology	18
		M.Tech – Nano Science and Technology	18
		MCA – Master of Computer Applications	60
		MBA – Master of Business Administration	60
		12.	2013-2014
B.Tech – Bio-Technology	60		
B.E – Electrical and Electronics Engineering	60		
B.E – Electronics and Communication Engineering	120		
B.E – Computer science and Engineering	60		
B.E – Mechanical Engineering	120		
B.E- Civil Engineering	60		
B.E- Aeronautical Engineering	60		
M.E – Embedded Systems	18		
M.E – CAD / CAM	18		
M.E – Computer Science and Engineering	18		
M.E – Biomedical Engineering	18		
M.E – Power Systems Engineering	18		
M.Tech – Biotechnology	18		
M.Tech – Nano Science and Technology	18		
MCA – Master of Computer Applications	60		
MBA – Master of Business Administration	60		
13.	2014-2015		
		B.Tech – Bio-Technology	60
		B.E – Electrical and Electronics Engineering	60
		B.E – Electronics and Communication Engineering	120
		B.E – Computer science and Engineering	60
		B.E – Mechanical Engineering	180
		B.E- Civil Engineering	120
		B.E- Aeronautical Engineering	60
		M.E – Embedded Systems	18

		M.E – CAD / CAM	18
		M.E – Computer Science and Engineering	18
		M.E – Biomedical Engineering	18
		M.E – Power Systems Engineering	18
		M.E – Communications Engineering	18
		M.E – Structural Engineering	18
		M.Tech – Biotechnology	18
		M.Tech – Nano Science and Technology	18
		MCA – Master of Computer Applications	60
		MBA – Master of Business Administration	60
13.	2015-2016	B.E – Biomedical Engineering	60
		B.Tech – Bio-Technology	60
		B.E – Electrical and Electronics Engineering	60
		B.E – Electronics and Communication Engineering	120
		B.E – Computer science and Engineering	60
		B.E – Mechanical Engineering	180
		B.E- Civil Engineering	120
		B.E- Aeronautical Engineering	60
		M.E – Embedded Systems	18
		M.E – CAD / CAM	18
		M.E – Computer Science and Engineering	18
		M.E – Biomedical Engineering	18
		M.E – Power Systems Engineering	18
		M.E – Communications Engineering	18
		M.E – Structural Engineering	18
		M.Tech – Biotechnology	18
		M.Tech – Nano Science and Technology	18
		MCA – Master of Computer Applications	60
		MBA – Master of Business Administration	60
		13.	2016-2017
B.Tech – Bio-Technology	60		
B.E – Electrical and Electronics Engineering	60		
B.E – Electronics and Communication Engineering	120		
B.E – Computer science and Engineering	60		
B.E – Mechanical Engineering	180		
B.E- Civil Engineering	120		
B.E- Aeronautical Engineering	60		
M.E – Embedded Systems	18		
M.E – CAD / CAM	18		
M.E – Computer Science and Engineering	18		
M.E – Biomedical Engineering	18		
M.E – Power Systems Engineering	18		
M.E – Communications Engineering	18		
M.E – Structural Engineering	18		

		M.Tech – Biotechnology	18
		M.Tech – Nano Science and Technology	18
		MCA – Master of Computer Applications	60
		MBA – Master of Business Administration	60
13.	2017-2018	B.E – Biomedical Engineering	60
		B.Tech – Bio-Technology	60
		B.E – Electrical and Electronics Engineering	60
		B.E – Electronics and Communication Engineering	120
		B.E – Computer science and Engineering	60
		B.E – Mechanical Engineering	180
		B.E- Civil Engineering	120
		B.E- Aeronautical Engineering	60
		M.E – Embedded Systems	18
		M.E – CAD / CAM	18
		M.E – Computer Science and Engineering	18
		M.E – Biomedical Engineering	18
		M.E – Power Systems Engineering	18
		M.E – Communications Engineering	18
		M.E – Structural Engineering	18
		M.Tech – Biotechnology	18
		M.Tech – Nano Science and Technology	18
		MCA – Master of Computer Applications	60
		MBA – Master of Business Administration	60
		14.	2018-2019
B.Tech – Bio-Technology	60		
B.E – Electrical and Electronics Engineering	60		
B.E – Electronics and Communication Engineering	120		
B.E – Computer science and Engineering	60		
B.E – Mechanical Engineering	180		
B.E- Civil Engineering	120		
B.E- Aeronautical Engineering	60		
M.E – Embedded Systems	18		
M.E – CAD / CAM	18		
M.E – Computer Science and Engineering	18		
M.E – Biomedical Engineering	18		
M.E – Power Systems Engineering	18		
M.E – Communications Engineering	18		
M.E – Structural Engineering	18		
M.Tech – Biotechnology	18		
M.Tech – Nano Science and Technology	18		
MCA – Master of Computer Applications	60		
MBA – Master of Business Administration	60		
15.	2019-2020		
		B.Tech – Bio-Technology	60

		B.E – Electrical and Electronics Engineering	30
		B.E – Electronics and Communication Engineering	60
		B.E – Computer science and Engineering	60
		B.E – Mechanical Engineering	180
		B.E- Civil Engineering	120
		B.E- Aeronautical Engineering	30
		M.E – Embedded Systems	18
		M.E – CAD / CAM	18
		M.E – Computer Science and Engineering	18
		M.E – Biomedical Engineering	18
		M.E – Power Systems Engineering	18
		M.E – Communications Engineering	18
		M.E – Structural Engineering	18
		M.Tech – Biotechnology	18
		M.Tech – Nano Science and Technology	18
		MCA – Master of Computer Applications	30
		MBA – Master of Business Administration	60
16.	2020-2021	B.E – Biomedical Engineering	60
		B.Tech – Bio-Technology	60
		B.E – Electrical and Electronics Engineering	60
		B.E – Electronics and Communication Engineering	60
		B.E – Computer science and Engineering	60
		B.E – Mechanical Engineering	180
		B.E- Civil Engineering	120
		B.E- Aeronautical Engineering	60
		M.E – Embedded Systems	18
		M.E – CAD / CAM	18
		M.E – Computer Science and Engineering	18
		M.E – Biomedical Engineering	18
		M.E – Power Systems Engineering	18
		M.E – Communications Engineering	18
		M.E – Structural Engineering	18
		M.Tech – Biotechnology	18
		M.Tech – Nano Science and Technology	18
		MCA – Master of Computer Applications	60
MBA – Master of Business Administration	60		
17.	2021-2022	B.E – Biomedical Engineering	60
		B.Tech – Bio-Technology	60
		B.E – Electrical and Electronics Engineering	60
		B.E – Electronics and Communication Engineering	60
		B.E – Computer science and Engineering	60
		B.E – Mechanical Engineering	180
		B.E- Civil Engineering	120
		B.E- Aeronautical Engineering	60

		M.E – Embedded Systems	18
		M.E – CAD / CAM	18
		M.E – Computer Science and Engineering	18
		M.E – Biomedical Engineering	18
		M.E – Power Systems Engineering	18
		M.E – Communications Engineering	18
		M.E – Structural Engineering	18
		M.Tech – Biotechnology	18
		M.Tech – Nano Science and Technology	18
		MCA – Master of Computer Applications	60
		MBA – Master of Business Administration	60
18	2022-2023	B.E - Biomedical Engineering	60
		B.Tech - Biotechnology	60
		B.E - Electrical and Electronics Engineering	60
		B.E - Electronics and Communication Engineering	60
		B.E - Computer Science and Engineering	60
		B.E - Mechanical Engineering	90
		B.E- Civil Engineering	60
		B.E- Aeronautical Engineering	60
		B.E – Computer Science and Engineering (Artificial Intelligence & Machine Learning)	30
		B.E – Computer Science and Engineering (Cyber Security)	30
		B.E – Robotics and Automation	30
		B.Tech – Agricultural Engineering	60
		M.E - Embedded Systems	18
		M.E – CAD / CAM	18
		M.E – Computer Science and Engineering	18
		M.E – Biomedical Engineering	18
		M.E – Power Systems Engineering	18
		M.Tech – Biotechnology	18
		M.Tech – Nano Science and Technology	18
		M.E – Communication Engineering	18
		M.E – Structural Engineering	18
		MCA - Master of Computer Applications	60
		MBA - Master of Business Administration	60
18	2023-2024	B.E - Biomedical Engineering	60
		B.Tech - Biotechnology	60
		B.E - Electrical and Electronics Engineering	60
		B.E - Electronics and Communication Engineering	30
		B.E - Computer Science and Engineering	60
		B.E - Mechanical Engineering	90
		B.E- Civil Engineering	60
B.E- Aeronautical Engineering	30		

		B.E – Computer Science and Engineering (Artificial Intelligence & Machine Learning)	60
		B.E – Computer Science and Engineering (Cyber Security)	60
		B.E – Robotics and Automation	30
		B.Tech – Agricultural Engineering	60
		M.E - Embedded Systems	18
		M.E – CAD / CAM	18
		M.E – Computer Science and Engineering	18
		M.E – Biomedical Engineering	24
		M.E – Power Systems Engineering	18
		M.Tech – Biotechnology	18
		M.Tech – Nano Science and Technology	12
		M.E – Communication Engineering	12
		M.E – Structural Engineering	24
		MCA - Master of Computer Applications	120
		MBA - Master of Business Administration	120
		Diploma in Civil Engineering	60
		Diploma in Mechanical Engineering	60
		Diploma in Computer Science and Information Technology	60
		Diploma in Electrical and Electronics Engineering	60
18	2024-2025	B.E - Aeronautical Engineering	30
		B.E - Biomedical Engineering	60
		B.E - Electrical and Electronics Engineering	60
		B.E - Electronics and Communication Engineering	30
		B.E - Computer Science and Engineering	60
		B.E - Mechanical Engineering	90
		B.E - Civil Engineering	60
		B.E - Computer Science and Engineering (Artificial Intelligence & Machine Learning)	60
		B.E - Computer Science and Engineering (Cyber Security)	60
		B.E - Robotics and Automation	30
		B.Tech - Biotechnology	60
		B.Tech - Agricultural Engineering	60
		M.E - Biomedical Engineering	24
		M.E - Structural Engineering	24
		M.E - Embedded Systems	18
		M.E - CAD / CAM	18
		M.E - Computer Science and Engineering	18
		M.E - Power Systems Engineering	18
		M.E - Communication Engineering	12
		M.Tech - Biotechnology	18
		M.Tech - Nano Science and Technology	12
		MCA - Master of Computer Applications	120
		MBA - Master of Business Administration	120

		Diploma in Civil Engineering	60
		Diploma in Mechanical Engineering	60
		Diploma in Computer Science and Information Technology	60
		Diploma in Electrical and Electronics Engineering	60
19	2025-2026	B.E - Bio-Medical Engineering	60
		B.E - Electrical and Electronics Engineering	30
		B.E - Electronics and Communication Engineering	60
		B.E - Computer Science and Engineering	60
		B.E - Computer Science and Engineering (Artificial Intelligence and Machine Learning)	60
		B.E - Computer Science and Engineering (Cyber Security)	60
		B.E – Robotics and Automation	30
		B.E - Mechanical Engineering	90
		B.E- Civil Engineering	60
		B.E- Aeronautical Engineering	30
		B.Tech - Bio-Technology	60
		B.Tech – Agricultural Engineering	60
		M.E - Embedded Systems	18
		M.E – CAD / CAM	18
		M.E – Computer Science and Engineering	18
		M.E – Biomedical Engineering	24
		M.E – Power Systems Engineering	18
		M.E – Communications Engineering	12
		M.E – Structural Engineering	24
		M.Tech – Biotechnology	18
		M.Tech – Nano Science and Technology	12
		Master of Computer Applications	120
		Master of Business Administration	120
		Dip.in Mechanical Engineering	60
		Dip.in Civil Engineering	30
		Dip.in Electrical and Electronics Engineering	60
		Dip.in Computer Science and Information Technology	60
		Dip.in Biomedical Engineering	30
		Dip.in Agricultural Engineering	30
		Dip.in 3-d Animation and Graphics	30
		Dip.in Technician X-ray Technology	30
		Dip.in Medical Laboratory Technology	60
		Dip.in Fashion Technology	30
Dip.in Automobile Engineering	30		
Dip.in Petrochemical Engineering	30		
Dip.in Marine Engineering	30		
Dip.in Chemical Engineering	30		

- **Number of Students admitted under various categories in the last three years**

Sl. No.	Branch	Actual admissions 2024-2025	Actual admissions 2023-2024	Actual admissions 2022-2023
1.	B.E- Aeronautical Engineering	10	38	39
2.	B.E - Biomedical Engineering	58	24	30
3.	B.E - Electrical and Electronics Engineering	14	12	8
4.	B.E - Electronics and Communication Engineering	11	7	7
5.	B.E - Mechanical Engineering	23	46	43
6.	B.E- Civil Engineering	13	20	9
7.	B.E - Computer Science and Engineering	60	7	13
8.	B.E – Computer Science and Engineering (Artificial Intelligence & Machine Learning)	53	4	10
9.	B.E – Computer Science and Engineering (Cyber Security)	26	14	6
10.	B.E – Robotics and Automation	1	17	8
11.	B.Tech - Biotechnology	41	1	2
12.	B.Tech – Agricultural Engineering	23	10	11
13.	M.E - Embedded System Technologies	7	7	5
14.	M.E – CAD / CAM	4	8	13
15.	M.E – Computer Science and Engineering	13	11	3
16.	M.E – Biomedical Engineering	24	9	17
17.	M.E – Power Systems Engineering	4	8	10
18.	M.E – Communication Engineering	5	13	14
19.	M.E – Structural Engineering	24	1	1
20.	M.Tech – Biotechnology	18	2	2
21.	M.Tech – Nano Science and Technology	2	24	18
22.	MCA - Master of Computer Applications	48	49	41
23.	MBA - Master of Business Administration	101	116	60
24.	Diploma in Civil Engineering	10	7	-
25.	Diploma in Mechanical Engineering	30	28	-
26.	Diploma in Computer Science and Information Technology	25	25	-
27.	Diploma in Electrical and Electronics Engineering	21	25	-

- **Number of Applications Received During Last two years for admission under management Quota**

Year	Applications received
2023-2024	675
2022-2023	550

X. ADMISSION PROCEDURE:

As per Tamil Nadu Government Policy

XV. INFORMATION ON INFRASTRUCTURE AND OTHER RESOURCES AVAILABLE

Sl.No	Item	Available(Yes/No)
1.	Drinking Water facility	YES
2.	Electric Supply	YES
3.	Generator (min.25 KVA)	YES
4.	Sewage Disposal	YES
5.	Telephone facility	YES
6.	Vehicle Parking Stand	YES
7.	Website	YES
8.	Barrier free built environment for disable	YES
9.	Safety Provisions(Fire and Others)	YES
10.	General Insurance for Assets	YES
11.	All Weather Approach road	YES
12.	Notice Boards	YES
13.	Public announcement System	YES
14.	ERP for student-institution,Parent interaction	YES
15.	Transport facilities for staff and students	YES
16.	Bank /extension counter facility / post	NO
17.	CCTV Security	YES
18.	LCD in Class Rooms	YES
19.	Group Insurance for Employee	YES
20.	Group Insurance for Students	YES
21.	Staff Quarters	NO
22.	Rain Water Harvesting Structures	YES

- **Library**

Sl. No	Course(s)	Number of titles	Number of volumes	Journals	
				National	International
1	B.E- Aeronautical Engineering	200	1200	6	3
2	B.E - Bio-Medical Engineering	638	2550	6	6
3	B.E - Electrical and Electronics Engineering	675	3000	6	6
4	B.E - Electronics and Communication Engineering	1425	5700	6	12
5	B.E - Computer science and Engineering	600	2401	6	6
6	B.E – Computer Science and Engineering (Artificial Intelligence & Machine Learning)	610	2300	6	6
7	B.E – Computer Science and Engineering (Cyber Security)	615	2250	6	6
8	B.E - Mechanical Engineering	888	3550	8	10
9	B.E- Civil Engineering	306	1723	6	6
10	B.E – Robotics and Automation	210	1250	6	3
11	B.Tech - Bio-Technology	825	3300	6	6
12	B.Tech – Agricultural Engineering	350	2010	6	6
13	M.E - Embedded Systems	212	1000	6	4
14	M.E – CAD / CAM	162	900	6	4
15	M.E – Computer Science and Engineering	113	700	2	4
16	M.E – Biomedical Engineering	75	400	3	4
17	M.E – Power Systems Engineering	75	400	6	1
18	M.E – Communications Engineering	45	180	3	1
19	M.E – Structural Engineering	43	266	3	1
20	M.Tech – Biotechnology	175	700	2	5
21	M.Tech – Nano Science and Technology	125	500	4	6
22	Master of Computer Applications	1150	4600	6	6

23	Master of Business Administration	1025	4100	9	15
24	Diploma in Civil Engineering	175	1150	3	3
25	Diploma in Mechanical Engineering	185	1025	3	3
26	Diploma in Computer Science and Information Technology	190	1250	3	3
27	Diploma in Electrical and Electronics Engineering	182	1050	3	3
Total		11274	49455	136	139

- **E-Library facilities - Available**

Chairman and Members of Governing Council

Name	Position	Qualification	Present Designation / Occupation	Telephone Numbers	Mobile No.	E-mail id	Address
Dr. ASHOK KUMAR T	Member Secretary	OTHERS-M.D-Others-DOCTOR	PROFESSOR	-	9443130263	ashokkumart263@gmail.com	KUMARAHAM,KOLLAMAVADI - 629801 Kanyakumari
Dr. JOTHI BASU S	Members	M.E.-CAD/CAM	PRINCIPAL	04651 - 239900	9281090009	udayajbonline@gmail.com	UDAYA SCHOOL OF ENGINEERING - 629204 Kanyakumari
Mr. BARATHAN B	Members	M.E.-Structural Engineering	PROFESSOR	-	9442247635	barathan632@gmail.com	NMS KAMARAJ POLYTECHNIC COLLEGE, PAZHAVILAI - 629004 Kanyakumari
Dr. CHRISTOPHER T	Members	Ph.D.-Others-mechanical engineering	PROFESSOR	-	9443998275	978christ275@gmail.com	GOVT. COLLEGE OF ENGG, TIRUNELVELI - 627007 Tirunelveli
Mr. KALYANASUNDARAM S	Members	B.A.-English	BRANCH MANAGER SETC	-	9486067294	kalyana294@gmail.com	SETC, NAGERCOIL - 629001 Kanyakumari
Mr. MANIVANNAN A	Members	Ph.D.-Others-Mechanical Engineering	PROFESSOR	-	9486230632	mani632@gmail.com	ANNA UNIVERSITY - 627007 Tirunelveli
Mr. RAMESH K	Members	M.Tech.-Information Technology	SCIENTIST	-	9442273841	978udayaengineering@gmail.com	ISRO - 627133 Tirunelveli
Dr. ARJUN SINGH ACT	Members	OTHERS-M.B.B.S-Others-DOCTOR	TRUSTEE	-	8903603699	978udayaengineering@gmail.com	RAJAKKAMANGALAM WEST JUNCTION, RAJAKKAMANGALAM POST - 629502 Kanyakumari
Mr. THAYAPARAN C	Vice Chairperson	M.E.-Manufacturing Engineering	CHAIRMAN	-	9443358902	978udayaengineering@gmail.com	19/2, RAJAKKAMANGALAM WEST JUNCTION, RAJAKKAMANGALAM POST - 629502 Kanyakumari
Mr. THIRUNAVUKARASU A	Chairman	OTHERS-iES-Others-ies	GENERAL MANAGER BSNL	-	9443100540	thirunavukarasubsnl@gmail.com	BSNL - NAGERCOIL Kanyakumari

XIV. DETAILS OF EXISTING FACULTY MEMBERS

Name of the Course	Sl. No.	Name (s) of the Teaching Faculty	Designation (Lecturer/ Asst. Professor/ Professor)	Qualifications with specialization			Date of Birth	Experience (Years) a) Teaching b) Industry c) Research			Date of Joining the Institution	Gross total salary as on date with scale & Basic pay
				UG	PG	Doctorate		a	b	c		
ECE	1.	Ms.S.B.Thanga Malar	Assistant Professor	B.E (ECE)	M.E (Applied Electronics)	-	09-01-1984	18	-	-	21-05-2007	15600+ AGP 5400
	2.	Ms. B. R. Uma Devi	Assistant Professor	B.E (ECE)	M.E (Communication System)	-	07-05-1985	17	-	-	03-01-2008	15600+ AGP 5400
	3.	Ms.S.Sindhuja	Assistant Professor	B.E (ECE)	M.E (Applied Electronics)	-	21-06-1993	7	-	-	09-10-2017	15600+ AGP 5400
	4.	Mr.L.Karthick Vijaya Raja	Assistant Professor	B.E (ECE)	M.E (Control and Instrumentation Engineering)	-	21-01-1986	12	-	-	06-02-2013	15600+ AGP 5400
	5.	Mrs.L.R.Jonisha Miriam	Asst. Prof.	B.E (ECE)	M.E (Communication Systems)	-	29-12-1991	2	-	-	24-03-2023	15600+AGP 5400
	6.	Mrs.S.Helina Sweety	Asst. Prof.	B.E (ECE)	M.E (Communication Systems)	-	22-11-1987	8.4	-	-	27-07-2023	15600+AGP 5400
EEE	1.	Mr. T.Rajesh	Assistant Professor	B.E (EEE)	M.E Power Electronics & Drives	-	23-03-1974	16	-	-	18-08-2008	15600+AGP 5400
	2.	Mrs.R.Shiba	Assistant Professor	B.E (EEE)	M.E (Communication Systems)	-	18-02-1988	12	-	-	30-08-2012	15600+AGP 5400
	3.	Mr.M.Muralish	Assistant Professor	B.E (EEE)	M.E (PED)	-	10-03-1984	6	-	-	03-04-2019	15600+AGP 5400
	4.	Ms.G.Suja	Assistant Professor	B.E (ICE)	M.E (PE&D)	-	12-05-1988	4	-	-	18-01-2021	15600+AGP 5400
	5.	Ms.S.Nivya	Assistant Professor	B.E (EEE)	M.E (Applied Electronics)	-	21-07-1996	2	-	-	02-11-2022	15600+AGP 5400

	6.	Mrs.K.Raji	Assistant Professor	B.E (EEE)	M.E Power Electronics & Drives	-	30-08-1982	3.9	-	-	15-12-2021	15600+AGP 5400
	7.	Mrs.K. Chandra Devi	Assistant Professor	B.E (EEE)	M.E Avionics	-	03-06-1985	1.5	-	-	10-07-2023	15600+AGP 5400
	8.	Mrs.A.Primrose	Assistant Professor	B.E (EEE)	M.E Power Electronics & Drives	-	30-06-1980	1.0	-	-	03-04-2024	15600+AGP 5400
	9.	Mrs.R.Binisha	Assistant Professor	B.E (EEE)	M.E (Software Engineering)	-	30-11-1986	1.0	-	-	22-04-2024	15600+AGP 5400
Biomedical Engineering	1	Mr.R.Mohan Kumar	Assistant Professor	B.E E&I	M.E Applied Electronics	-	26-04-1983	16	-	-	01-06-2009	15600+AGP 5400
	2	Ms.H.S.Anuja	Assistant Professor	B.E (BM)	M.E (Applied Electronics)	-	01-05-1989	12	-	-	17-07-2013	15600+AGP 5400
	3	Mrs.S.Sebija	Assistant Professor	B.E (ECE)	M.E (Applied Electronics)	-	17-05-1989	11	-	-	02-01-2014	15600+AGP 5400
	4	Ms.D.Remi	Assistant Professor	B.E (BM)	M.E (BM)	-	16-02-1990	9.0	-	-	15-12-2016	15600+AGP 5400
	5	Mrs.F.Hebsy Metchado	Assistant Professor	B.E (BM)	M.E (BM)	-	27-05-1993	1.2	-	-	01-02-2024	15600+AGP 5400
	6	Mrs.S.Aswathy Abirami	Assistant Professor	B.E (BM)	M.E (BM)	-	22-12-1999	-	-	-	04-11-2024	15600+AGP 5400
	7	Mr.K.T.Mujeeb Rahman	Assistant Professor	B.E (BM)	M.E (BM)	-	23-05-1981	-	-	-	04-11-2024	15600+AGP 5400
	8	Mrs.V.Bency Mol	Assistant Professor	B.E (BM)	M.E (BM)	-	24-10-2000	-	-	-	04-11-2024	15600+AGP 5400
	9	Mrs.R.Sharmila	Assistant Professor	B.E (BM)	M.E (BM)	-	25-11-1998	-	-	-	04-11-2024	15600+AGP 5400
	10	Ms.K.A.Neethu Krishna	Assistant Professor	B.E (BM)	M.E (BM)	-	12-03-1999	-	-	-	04-11-2024	15600+AGP 5400
Biotechnology	1	Dr.L.R.Monisha Miriam	Professor	B.Tech Bio-Tech	M.Tech Bio-Tech	Ph.D	14-08-1986	17	-	-	21-05-2007	37400+AGP 8700
	2	Mrs.C.Angel Rose Stary	Associate Professor	B.Tech Chemical Engg.	M.Tech Bio-Tech	-	28-02-1983	19	-	-	01-07-2005	15600+AGP 7600

	3	Ms.J.Sherly	Assistant Professor	B.Tech (Biotechnology)	M.Tech (Biotechnology)	-	11-07-1992	10	-	-	03-08-2015	15600+AGP 5400
	4	Ms.G.R.Meera	Assistant Professor	B.Tech (Biotechnology)	M.Tech (Biotechnology)	-	05-05-1990	8	-	-	06-09-2017	15600+AGP 5400
	5	Mr.M.Mari Vignesh	Assistant Professor	B.Tech (Biotechnology)	M.Tech (Biotechnology)	-	05-04-1993	8	-	-	06-09-2017	15600+AGP 5400
	6	Mrs.P.Arsula Rose	Assistant Professor	B.Sc (Biotechnology)	M.Tech (NST)	-	10-06-1979	8	-	-	06-09-2017	15600+AGP 5400
	7	Ms.J.Jeslin	Assistant Professor	B.Tech (Biotechnology)	M.Tech (Biotechnology)	-	15-11-1994	7	-	-	08-02-2018	15600+AGP 5400
	8	Mr.N.Edison	Assistant Professor	B.Tech (Biotechnology)	M.Tech (Biotechnology)	-	07-01-1987	6	-	-	29-05-2024	15600+AGP 5400
	9	Ms.A.Anitha	Assistant Professor	B.Tech (Biotechnology)	M.Tech (Biotechnology)	-	13-02-2001	-	-	-	29-05-2024	15600+AGP 5400
CSE	1	Mrs.D.K.Kalaivani	Associate Professor	B.E. (EEE)	M.E (CSE)	-	12-02-1980	15	-	-	01-06-2009	15600+AGP 7600
	2	Ms.S.Jamelia	Associate Professor	B.E (CSE)	M.Tech (CSE)	-	26-07-1978	17	-	-	09-06-2008	15600+AGP 7600
	3	Ms.C.Brintha	Assistant Professor	B.Tech (IT)	M.E (CSE)	-	08-03-1986	16	-	-	01-07-2009	15600+AGP 5400
	4	Mr.M.B.Jerrysmith	Assistant Professor	B.E (CSE)	M.Tech (C & IT)	-	09-06-1986	14	-	-	01-06-2011	15600+AGP 5400
	5	Ms.T.Escalin Freetha	Assistant Professor	B.E (CSE)	M.Tech (C & IT)	-	28-03-1985	14	-	-	01-06-2011	15600+AGP 5400
	6	Mr.J.Jegan Gladly Prince	Assistant Professor	B.E (CSE)	M.E (CSE)	-	12-02-1989	2	-	-	27-03-2023	15600+AGP 5400
	7	Mr.S.R.Sujin Raja	Assistant Professor	B.E (CSE)	M.E (CSE)	-	09-07-1987	2	-	-	03-01-2023	15600+AGP 5400
	8	Mrs.J.Sails Cablin	Assistant Professor	B.Tech (IT)	M.Tech (IT)	-	01-06-1985	6	-	-	27-03-2023	15600+AGP 5400
	9	Mr.J.Kumaran	Assistant Professor	B.E (CSE)	M.E (CSE)	-	07-04-1989	-	-	-	01-12-2023	15600+AGP 5400
	1	Mr.J.Jerin	Assistant Professor	B.E (CSE)	M.E (CSE)	-	20-09-1991	3	-	-	02-02-2022	15600+AGP 5400

CSE (Cyber Security)	2	Mrs.E.Auslin Vini	Assistant Professor	B.E (CSE)	M.E (CSE)	-	28-07-1988	2	-	-	02-05-2023	15600+AGP 5400
	3	Mr.D.S.Godson Sweety	Assistant Professor	B.E (CSE)	M.E (CSE)	-	16-02-1989	2	-	-	25-09-2023	15600+AGP 5400
	4	Mrs.J.Ebenezer	Assistant Professor	B.E (CSE)	M.E (CSE)	-	14-08-1985	2	-	-	06-05-2023	15600+AGP 5400
	5	Mrs.C.J.Jasmin	Assistant Professor	B.Tech (IT)	M.E (CSE)	-	30-01-1994	1	-	-	10-04-2024	15600+AGP 5400
	6	Ms.R.Anushia	Assistant Professor	B.E (CSE)	M.E (CSE)	-	20-09-1992	0.4	-	-	04-11-2024	15600+AGP 5400
	7	Mrs.J.Joseph Deena	Assistant Professor	B.E (CSE)	M.E (CSE)	-	26-03-1984	0.4	-	-	04-11-2024	15600+AGP 5400
	8	Mrs.E.Evelyn Jude	Assistant Professor	B.E (CSE)	M.E (CSE)	-	16-09-1987	0.4	-	-	04-11-2024	15600+AGP 5400
	CSE (AIML)	1	Mrs.N.S.Baviya	Assistant Professor	B.E (CSE)	M.E (EST)	-	04-06-1993	2	-	-	10-08-2022
2		Mrs.M.P.Srithi	Assistant Professor	B.E (CSE)	M.E (CSE)	-	16-05-1997	2	-	-	29-08-2022	15600+AGP 5400
3		Ms.V.C.Edwin Britta	Assistant Professor	B.E (CSE& Network)	M.E (CSE)	-	16-12-1992	0.5	-	-	19-08-2024	15600+AGP 5400
4		Mrs.E.Roset Vidhya	Assistant Professor	B.Tech (IT)	M.E (CSE)	-	04-08-1984	0.6	-	-	27-07-2023	15600+AGP 5400
5		Ms.M.Monisha	Assistant Professor	B.Tech (IT)	M.E (CSE)	-	22-01-1990	0.6	-	-	25-09-2023	15600+AGP 5400
6		Mr.S.P.Renjith	Assistant Professor	B.E (ECE)	M.E (CSE)	-	07-06-1980	0.4	-	-	04-11-2024	15600+AGP 5400
7		Mr.J.Arul Leo	Assistant Professor	B.E (ECE)	M.E (CSE)	-	02-03-1979	0.4	-	-	04-11-2024	15600+AGP 5400
8		Mr.K.G.Archana	Assistant Professor	B.Tech (IT)	M.E (CSE)	-	21-05-1996	0.4	-	-	04-11-2024	15600+AGP 5400
Mechanical Engineering	1	Dr.A.Florence	Associate Professor	B.E (Mechanical)	M.E (CAD/CAM)	Ph.D	04-06-1979	2	-	-	02-02-2022	15600+AGP 7600
	2	Mr.S.Sunish Kumar	Associate Professor	B.E (Mechanical)	M.E (Mfg. Engg)	-	28-03-1972	11	-	-	03-08-2015	15600+AGP 5400
	3	Mr. S.Saravanan	Assistant Professor	B.E (Mechanical)	M.E (CAD/CAM)	-	05-07-1985	12	-	-	01-06-2013	15600+AGP 7600

	4	Mr.K.Murugan	Assistant Professor	B.E (Mechanical)	M.E (CAD/CAM)	-	26-05-1976	12	-	-	07-05-2013	15600+AGP 5400
	5	Mr.D.Enigo Bessi	Assistant Professor	B.E (Mechanical)	M.E (Energy Engg)	-	05-04-1986	10	-	-	03-07-2015	15600+AGP 5400
	6	Mr.K.V.Subash	Assistant Professor	B.E (Mechanical)	M.E (CAD/CAM)	-	05-05-1974	9	-	-	01-03-2016	15600+AGP 5400
	7	Mr.S.Abhijith	Assistant Professor	B.E (Mechanical)	M.E (CAD/CAM)	-	26-05-1994	2.5	-	-	04-07-2022	15600+AGP 5400
	8	Mr.M.C.Clinton	Assistant Professor	B.E (Mechanical)	M.E (CAD/CAM)	-	22-02-1993	2.5	-	-	04-07-2022	15600+AGP 5400
	9	Mr.S.Jackson Raja	Assistant Professor	B.E (Mechanical)	M.E (CAD/CAM)	-	04-11-1997	0.4	-	-	04-11-2024	15600+AGP 5400
	10	Mr.V.Jayanath	Assistant Professor	B.E (Mechanical)	M.E (Engg.Design)	-	04-12-1993	0.4	-	-	04-11-2024	15600+AGP 5400
	11	Mr.F.Gnanaprakash	Assistant Professor	B.E (Mechanical)	M.E (Mfg. Engg)	-	27-05-1990	0.4	-	-	04-11-2024	15600+AGP 5400
	12	Mr.M.Subash	Assistant Professor	B.E (Mechanical)	M.E (CAD/CAM)	-	14-01-1986	0.4	-	-	04-11-2024	15600+AGP 5400
	13	Mr.C.Chenthil Kumar	Assistant Professor	B.E (Mechanical)	M.E (CAD)	-	08-09-1990	0.4	-	-	04-11-2024	15600+AGP 5400
	14	Mr.S.J.Arun Sasi	Assistant Professor	B.E (Mechanical)	M.E (Machine Design)	-	24-05-1990	0.4	-	-	04-11-2024	15600+AGP 5400
Robotics and Automation	1	Mr.C.Dhinesh Kumar	Assistant Professor	B.E (Mechanical)	M.E (CAD/CAM)	-	03-05-1987	12	-	-	01-07-2013	15600+AGP 5400
	2	Mr.R.John Herald	Assistant Professor	B.E (Mechanical)	M.E (CAD/CAM)	-	24-05-1985	9	-	-	06-01-2016	15600+AGP 5400
	3	Mr.T.Velrajan	Assistant Professor	B.E (Mechanical)	M.E (CAD/CAM)	-	05-07-1984	9	-	-	04-07-2022	15600+AGP 5400
	4	Mr.J.Jenish	Assistant Professor	B.E (Aeronautical)	M.E (CAD/CAM)	-	12-03-1989	0.5	-	-	04-11-2024	15600+AGP 5400
	5	Mr.P.Thuraimurugan	Assistant Professor	B.E (Mechanical)	M.E (CAD/CAM)	-	21-05-1990	0.5	-	-	04-11-2024	15600+AGP 5400
	6	Mr.N.N.Suthan Raja Prasad	Assistant Professor	B.E (Mechanical)	M.E (CAD/CAM)	-	19-08-1990	0.5	-	-	04-11-2024	15600+AGP 5400
Aeronautical Engineering	1	Mr.R.K.Nivendran	Assistant Professor	B.E (Aeronautical)	M.E (CAD/CAM)	-	05-06-1990	11	-	-	07-05-2014	15600+AGP 5400

	2	Mr.G.Satheesh Kumar	Assistant Professor	B.E (Aeronautical)	M.E (CAD/CAM)	-	15-06-1987	11	-	-	07-05-2014	15600+AGP 5400
	3	Mr.C.Sathiaseelan	Assistant Professor	B.E (Mechanical)	M.E (Production Engineering)	-	08-11-1970	10	-	-	03-08-2015	15600+AGP 5400
	4	Mr.R.Ramesh	Assistant Professor	B.E (Aeronautical)	M.E (CAD/CAM)	-	04-04-1991	11	-	-	31-12-2014	15600+AGP 5400
	5	Mr.B.Gnana Blessing	Assistant Professor	B.E (Aeronautical)	M.E (CAD/CAM)	-	20-11-1995	2.2	-	-	02-02-2023	15600+AGP 5400
	6	Mr.J.Anish	Assistant Professor	B.E (Mechanical)	M.E (Thermal Engg.)	-	16-03-1996	1.2	-	-	01-02-2024	15600+AGP 5400
Civil Engineering	1	Mr.Allen Wills	Assistant Professor	M.Sc (Physics)	M.Tech (Remote Sensing)	-	12-12-1984	11	-	-	01-04-2016	15600+AGP 5400
	2	Mr. J.Judulius	Assistant Professor	B.E (Civil)	M.E (Structural Engg.)	-	04-12-1992	8	-	-	09-10-2017	15600+AGP 5400
	3	Mr.D.Abishek Harries	Assistant Professor	B.E (Civil)	M.E (Structural Engg.)	-	03-09-1990	7	-	-	04-07-2018	15600+AGP 5400
	4	Mr.V.Sunil Daniel	Assistant Professor	B.E (Civil)	M.E (Structural Engg.)	-	03-09-1990	7	-	-	04-07-2018	15600+AGP 5400
	5	Mrs.B.Thanga Geetha	Assistant Professor	B.E (Civil)	M.E (Structural Engg.)	-	05-05-1992	7	-	-	04-07-2018	15600+AGP 5400
	6	Mr.K.Sunil Prakash	Assistant Professor	B.E (Civil)	M.E (Structural Engg.)	-	24-04-1996	4	-	-	04-01-2021	15600+AGP 5400
	7	Mrs.C.V.Jenisha	Assistant Professor	B.E (Civil)	M.E (Structural Engg.)	-	31-07-1992	4	-	-	03-09-2021	15600+AGP 5400
	8	Mr.D.Abinesh Livin	Assistant Professor	B.E (Civil)	M.E (Structural Engg.)	-	26-06-1996	4	-	-	03-09-2021	15600+AGP 5400
	9	Ms.S.R.Benifha Sherin	Assistant Professor	B.E (Civil)	M.E (Structural Engg.)	-	15-03-2000	2	-	-	31-07-2023	15600+AGP 5400
Agricultural Engg.	1	Mrs.Summi Bell Sutha	Assistant Professor	B.E (Civil)	M.E (Structural Engg.)	-	31-07-1980	11	-	-	02-07-2014	15600+AGP 5400
	2	Ms.V.R.Kala	Assistant Professor	B.E (Civil)	M.E (Structural Engg.)	-	17-05-1992	9	-	-	04-07-2016	15600+AGP 5400
	3	Mr.M.Manisekar	Assistant Professor	B.E (Civil)	M.E (Structural Engg.)	-	20-05-1985	2	-	-	03-01-2022	15600+AGP 5400
	4	Mr.K.Anish	Assistant Professor	B.E (Civil)	M.E (Structural Engg.)	-	03-05-1996	3	-	-	03-01-2022	15600+AGP 5400

	5	Ms.Aparna Balu	Assistant Professor	B.E (Civil)	M.E (Structural Engg.)	-	13-11-194	-	-	29-05-2024	15600+AGP 5400
	6	Ms.R.Atchaya	Assistant Professor	B.E (Civil)	M.E (Structural Engg.)	-	29-12-1998	2	-	01-02-2023	15600+AGP 5400
	7	Mrs.D.T.Bijila Jasmine	Assistant Professor	B.Sc (Agri)	M.Sc (BT)	M.Phil (BT)	10-07-1980	0.4		04-11-2024	15600+AGP 5400
	8	Mrs.S.Geetha	Assistant Professor	B.Sc (Agri)	MBA	-	11-06-1990	0.4	-	04-11-2024	15600+AGP 5400
	9	Mrs.T.Pratheeba	Assistant Professor	B.E (Civil)	M.E (Structural Engg.)	-	20-03-1992	8.6	-	04-11-2024	15600+AGP 5400
Sciences & Humanities	1.	Dr.T.Mary Jeeva	Professor	B.Sc (Physics)	M.Sc (Physics)	M.Phil Ph.D	04-03-1974	24	-	25-09-2018	37400+AGP 8700
	2.	Ms.R.Adlin Reni	Assistant Professor	B.Sc (Physics)	M.Sc (Physics)	M.Phil	04-06-1997	2	-	05-06-2023	15600+AGP 5400
	3.	Dr.C.Smitha Rose	Assistant Professor	B.Sc (Physics)	M.Sc (Physics)	Ph.D	03-07-1981	2	-	15-06-2023	15600+AGP 5400
	4.	Mrs.K.Usha	Assistant Professor	B.Sc (Maths)	M.Sc (Maths)	M.Phil	19-05-1981	0.6	-	02-09-2024	15600+AGP 5400
	5.	Mrs.H.Subha	Assistant Professor	B.Sc (Maths)	M.Sc (Maths)	M.Ed	01-06-1982	12	-	02-09-2013	15600+AGP 5400
	6.	Mr.T.Gopu	Assistant Professor	B.Sc (Maths)	M.Sc (Maths)	-	27-06-1969	10	-	21-07-2015	15600+AGP 5400
	7.	Mrs. A.K.Kohila	Assistant Professor	B.Sc (Maths)	M.Sc (Maths)	M.Phil	20-07-1990	7	-	03-08-2015	15600+AGP 5400
	8.	Mrs.M.Chithra	Assistant Professor	B.Sc (Maths)	M.Sc (Maths)	M.Phil	14-05-1985	7	-	01-06-2018	15600+AGP 5400
	9.	Mrs.G.Uma	Assistant Professor	B.Sc (Maths)	M.Sc (Maths)	M.Phil	24-04-1994	6	-	03-10-2018	15600+AGP 5400
	10.	Mrs.S.P.Santhy	Assistant Professor	B.Sc (Maths)	M.Sc (Maths)	M.Phil	31-07-1970	6	-	01-07-2019	15600+AGP 5400
	11.	Mrs.J.Riji	Assistant Professor	B.Sc (Maths)	M.Sc (Maths)	M.Phil	28-09-1985	3	-	01-02-2022	15600+AGP 5400
	12.	Ms.T.Nisha	Assistant Professor	B.Sc (Maths)	M.Sc (Maths)	M.Phil	27-10-1998	3	-	01-02-2022	15600+AGP 5400
	13.	Mrs.C.Jashwini Janet	Assistant Professor	B.Sc (Maths)	M.Sc (Maths)	M.Phil	12-11-1998	2	-	23-11-2022	15600+AGP 5400

14.	Dr.S.Ancy Mary	Assistant Professor	B.Sc (Maths)	M.Sc (Maths)	Ph.D	18-09-1981	0.5	-	-	20-08-2024	15600+AGP 5400
15.	Dr.J.Jeba Lisa	Assistant Professor	B.Sc (Maths)	M.Sc (Maths)	Ph.D	03-11-1994	0.5	-	-	04-11-2024	15600+AGP 5400
16.	Mr.K.Srikrishna Ramesh	Assistant Professor	B.Sc (Chemistry)	M.Sc (Chemistry)	M.Phil	25-07-1984	16	-	-	21-01-2009	15600+AGP 5400
17.	Mrs.J.Nirmala	Assistant Professor	B.Sc (Chemistry)	M.Sc (Chemistry)	M.Phil	06-04-1979	12	-	-	02-09-2013	15600+AGP 5400
18.	Mrs.K.Nithya Kumari	Assistant Professor	B.Sc (Chemistry)	M.Sc (Chemistry)	M.Phil	15-05-1993	6	-	-	02-12-2019	15600+AGP 5400
19.	Mrs.S.Anitha Kumari	Assistant Professor	B.Sc (Chemistry)	M.Sc (Chemistry)	M.Phil	30-05-1982	10.5	-	-	01-08-2024	15600+AGP 5400
20.	Mrs.J.Anne Beaula	Assistant Professor	B.Sc (Chemistry)	M.Sc (Chemistry)	M.Phil	07-05-1980	0.5	-	-	01-08-2024	15600+AGP 5400
21.	Mrs.K.V.Dhanya	Assistant Professor	B.Sc (Chemistry)	M.Sc (Chemistry)	M.Phil	21-03-1989	0.4	-	-	04-11-2024	15600+AGP 5400
22.	Ms.Maryarockia Salooja.B	Assistant Professor	B.A (English)	M.A (English)	M.Phil	08-01-1986	10	-	-	03-08-2015	15600+AGP 5400
23.	Mr.K.Jenish	Assistant Professor	B.A (English)	M.A (English)	M.Phil	01-06-1995	7	-	-	20-07-2018	15600+AGP 5400
24.	Mr.A.Vaikundamani	Assistant Professor	B.A (English)	M.A (English)	M.Phil	20-04-1988	6	-	-	02-12-2019	15600+AGP 5400
25.	Ms.S.Asathy	Assistant Professor	B.A (English)	M.A (English)	M.Phil	20-05-1990	6	-	-	02-12-2019	15600+AGP 5400
26.	Mrs.J.Jeslin Sheriba Nevis	Assistant Professor	B.A (English)	M.A (English)	M.Phil	31-07-1989	3	-	-	04-07-2022	15600+AGP 5400
27.	Mrs.C.Bala Sangeetha	Assistant Professor	B.A (Tamil)	M.A (Tamil)	M.Phil	07-06-1984	2	-	-	08-01-2018	15600+AGP 5400
28.	Dr.W.Jisla	Assistant Professor	B.A (Tamil)	M.A (Tamil)	Ph.D	15-06-1989	0.5	-	-	04-11-2024	15600+AGP 5400
29.	Ms.M.Priyankagithanjali	Assistant Professor	B.E (ECE)	M.E (Applied Electronics)	-	25-12-1987	4	-	-	03-02-2021	15600+AGP 5400
30.	Ms.A.G.Rathiga	Assistant Professor	B.E (EEE)	M.E (Power System Engineering)	-	23-08-1988	1	-	-	02-02-2023	15600+AGP 5400

	31.	Mrs.C.D.Jaya Suba	Assistant Professor	B.E (ECE)	M.E (Communication Systems)	-	25-03-1989	0.6	-	-	24-09-2024	15600+AGP 5400
	32.	Mr.T.Kannan	Assistant Professor	B.E (Aero)	M.E (CAD/CAM)	-	09-05-1990	0.4	-	-	04-11-2024	15600+AGP 5400
	33.	Mrs.N.Bindhuja	Assistant Professor	B.E (Civil)	M.E (Construction Engg. Mgmt.)	-	07-06-1996	0.4	-	-	04-11-2024	15600+AGP 5400
	34.	Mrs.D.Judit Prince Seera	Assistant Professor	B.Sc (Zoology)	M.Sc (Soft.Tech.&Mgt.)	M.Tech (CSE& IT)	02-11-1978	0.4	-	-	04-11-2024	15600+AGP 5400
	35.	Ms.P.Pratheeba	Assistant Professor	B.E (Civil)	M.E (Structural Engg.)	-	08-05-1993	0.4	-	-	04-11-2024	15600+AGP 5400
	36.	Mrs.P.Puvanavathi	Assistant Professor	B.E (Civil)	M.E (Structural Engg.)	-	28-07-1991	0.4	-	-	04-11-2024	15600+AGP 5400
	37.	Mrs.P.Ragavi	Assistant Professor	B.E (ECE)	M.E (Communication & N/w)	-	14-09-1992	0.4	-	-	04-11-2024	15600+AGP 5400
	38.	Ms.V.Krishnammal	Assistant Professor	B.E (Aero)	M.E (CAD/CAM)	-	19-02-2000	0.4	-	-	04-11-2024	15600+AGP 5400
	39.	Mrs.C.Libina	Assistant Professor	B.E (ECE)	M.E (Communication Systems)	-	31-07-1995	0.2	-	-	06-01-2025	15600+AGP 5400
	40.	Mrs.M.J.Anu	Assistant Professor	B.E (Civil)	M.E (Structural Engg.)	-	27-06-1992	0.1	-	-	04-02-2025	15600+AGP 5400
M.E Embedded Systems Technologies	1	Mr.K.E.Sajeev Jeba King	Assistant Professor	B.E (EEE)	M.E (Applied Electronics)	-	30-09-1981	17	-	-	21-05-2007	15600+ AGP 5400
	2	Mr.S.Hari	Assistant Professor	B.E (ECE)	M.E (EST)	-	05-06-1994	4	-	-	04-01-2021	15600+AGP 5400
	3	Mr.K.Arun	Assistant Professor	B.E (ECE)	M.E (Applied Electronics)	-	04-07-1989	4	-	-	01-02-2021	15600+AGP 5400
M.E Communication Engineering	1	Ms.J.V.Thirupthika	Assistant Professor	B.E (ECE)	M.E (Applied Electronics)	-	07-10-1994	8	-	-	01-09-2017	15600+ AGP 5400
	2	Mr.J.Jaya Lalin	Assistant Professor	B.E (ECE)	M.E (Applied Electronics)	-	25-09-1987	13	-	-	05-01-2012	15600+ AGP 5400

M.E Power System Engineering	1	Dr.A.Sundaramoorthy	Professor	B.E (ECE)	M.E Applied Electronics	-	23-08-1980	11.5	-	-	01-12-2022	37400+AGP 8700
	2	Ms.P.Sreeja	Assistant Professor	B.E (EEE)	M.E (PSE)	-	13-07-1997	4.5	-	-	01-09-2020	15600+AGP 5400
	3	Mr.M.Manikandan	Assistant Professor	B.E (EEE)	M.E Power Electronics & Drives	-	02-05-2000	1.5	-	-	01-11-2023	15600+AGP 5400
M.E Biomedical Engineering	1	Dr.K. Vijila Rani	Professor	B.E (ECE)	M.E (Digital Electronics)	Ph.D	10-06-1994	5	-	-	01-08-2020	37400+AGP 8700
	2	Ms.T.Merlin Leo	Assistant Professor	B.E (ECE)	M.E (Communication Systems)	-	27-03-1975	21	-	-	20-11-2018	15600+AGP 5400
	3	Mr.R.Amith Rajkumar	Assistant Professor	B.Tech (BM)	M.Tech (NST)	-	22-04-1985	8	-	-	25-08-2016	15600+AGP 5400
	4	Ms.T.Jilly Arasu	Assistant Professor	B.E (BM)	M.E (Bio Medical Instrumentation)	-	09-04-1989	7	-	-	09-10-2017	15600+AGP 5400
M.E Structural Engineering	1	Mrs.D.Sheeba	Assistant Professor	B.E (Civil)	M.E (Structural Engg.)	-	17-05-1987	11	-	-	02-07-2014	15600+AGP 5400
	2	Mrs.P.M.Lovely	Assistant Professor	B.E (Civil)	M.E (Structural Engg.)	-	03-06-1981	6	-	-	01-02-2019	15600+AGP 5400
	3	Ms.T.R.Divya	Assistant Professor	B.E (Civil)	M.E (Structural Engg.)	-	12-12-1997	3	-	-	03-01-2022	15600+AGP 5400
	4	Mrs.R.Reshma Suresh	Assistant Professor	B.E (Civil)	M.E (Structural Engg.)	-	08-12-1992	2	-	-	04-07-2022	15600+AGP 5400
M.Tech Biotech	1	Dr.D.Devina Merin	Assistant Professor	B.Tech (Biotechnology)	M.Tech (Biotechnology)	-	10-04-1984	15	-	-	01-07-2010	15600+AGP 5400
	2	Mrs.B.S.Dhanya	Assistant Professor	B.Sc (Biochemistry)	M.Sc (Biochemistry)	M.Tech (BT)	21-08-1987	7	-	-	08-02-2018	15600+AGP 5400
	3	Mrs.J.Beauty Anusha	Assistant Professor	B.Tech (BT)	M.Tech (BT)	-	01-02-1986	2	-	-	03-05-2023	15600+AGP 5400
M.Tech Nano Science and Technology	1	Dr.S.Madonna Shalma	Assistant Professor	B.Tech (BT)	M.Tech (BT)	Ph,D	03-03-1990	7.5	-	-	09-10-2017	15600+AGP 5400
	2	Ms.A.Anusha	Assistant Professor	B.Tech (BT)	M.Tech (BT)	-	24-01-1995	5	-	-	04-07-2018	15600+AGP 5400
M.E Computer	1	Dr.M.Mathi Murugan	Associate Professor	MCA	M.Tech(IT)	Ph,D (CSE)	21-05-1980	15	-	-	17-05-2018	15600+AGP 7600

Science and Engineering	2	Ms.T.Mary Daphne	Associate Professor	B.E (CSE)	M.E (CSE)	-	21-02-1981	17	-	-	01-02-2006	15600+AGP 7600
	3	Mrs.S.Amala Anu Beula	Assistant Professor	B.Tech (IT)	M.E (CSE)	-	04-11-2024	0.4	-	-	13-12-1987	15600+AGP 5400
M.E CAD / CAM	1	Dr.S.Jothi Basu	Associate Professor	B.E (Mech.)	M.E (CAD/CAM)	-	10-05-1981	21	-	-	03-08-2015	15600+AGP 5400
	2	Mr.N.Mohana Sundaram	Associate Professor	B.E (Mechanical)	M.E (CAD/CAM)	-	05-06-1970	25	-	-	02-07-2014	15600+AGP 5400
	3	Mr.S.Sreejan	Assistant Professor	B.E (Mechanical)	M.E (Manufacturing Engineering)	-	31-05-1985	12	-	-	16-07-2013	15600+AGP 5400
M.C.A	1.	Mr.L.Rajalingam	Assistant Professor	BCA Computer Application	M.C.A Computer Application	-	20-04-1978	16	-	-	10-04-2015	15600+AGP 5400
	2.	Mr.J.Krishna Kumar	Assistant Professor	B.Sc (CS)	M.C.A Computer Application	-	02-09-1982	7	-	-	02-07-2018	15600+AGP 5400
	3.	Mrs.A.Mary Rema Sree	Assistant Professor	B.Sc (CS)	M.C.A Computer Application	-	06-01-1980	1.5	-	-	01-12-2023	15600+AGP 5400
	4.	Mrs.T.Jagancy	Assistant Professor	BCA Computer Application	M.C.A Computer Application	M.Phil	24-05-1990	0.5	-	-	04-11-2024	15600+AGP 5400
	5.	Mrs.S.Suganya	Assistant Professor	B.Sc (IT)	M.C.A Computer Application	-	10-04-1989	0.5	-	-	04-11-2024	15600+AGP 5400
	6.	Mrs.M.Sendura	Assistant Professor	B.Sc (Mathematics)	M.C.A Computer Application	-	07-07-1995	0.5	-	-	04-11-2024	15600+AGP 5400
	7.	Mrs.M.Bazilla	Assistant Professor	B.Sc (Mathematics)	M.C.A Computer Application	-	17-11-1996	0.5	-	-	04-11-2024	15600+AGP 5400
	8.	Mr.R.Dharmesh	Assistant Professor	B.Sc (CS)	M.C.A Computer Application	-	24-11-1981	0.5	-	-	04-11-2024	15600+AGP 5400
	9.	Mrs.R.Padma Priya	Assistant Professor	BCA Computer Application	M.C.A Computer Application	-	17-10-1994	0.2	-	-	06-02-2025	15600+AGP 5400
	10.	Mrs.N.Anisha Mol	Assistant Professor	BCA Computer Application	M.C.A Computer Application	-	29-05-1990	0.5	-	-	04-11-2024	15600+AGP 5400
	11.	Mr.G.Bennet	Assistant Professor	B.Sc (Physics)	M.C.A Computer Application	-	07-06-1969	0.5	-	-	04-11-2024	15600+AGP 5400
	12.	Mrs.K.Usha Nandini	Assistant Professor	B.Sc (Mathematics)	M.C.A Computer Application	M.Phil	11-05-1975	16.2	-	-	04-11-2024	15600+AGP 5400

	13.	Ms.T.Babitha	Assistant Professor	B.Sc (CS)	M.C.A Computer Application	-	22-07-2000	0.2	-	-	21-02-2025	15600+AGP 5400
M.B.A	1.	Dr.Dhason Antony	Professor	B.Sc (Chemistry)	M.P.M (Personal Management)	Ph.D	21-05-1960	32.5	-	-	06-05-2024	37400+AGP 8700
	2.	Mr.K.Venkadesh	Assistant Professor	B.A (Sociology)	M.B.A Finance & Marketing	-	10-05-1982	17	-	-	02-07-2007	15600+AGP 5400
	3.	Mr.Kannan.S	Assistant Professor	B.A (History)	M.B.A Human resources & Marketing	-	27-05-1988	13	-	-	29-01-2011	15600+AGP 5400
	4.	Ms.S.Monisha	Assistant Professor	B.Tech (IT)	M.B.A (Business Administration)	-	4-06-1993	7	-	-	19-10-2017	15600+AGP 5400
	5.	Mr.T.Abhishek	Assistant Professor	B.E (Mechanical)	M.B.A (Business Administration)	-	18-06-1996	1.5	-	-	01-12-2023	15600+AGP 5400
	6.	Mr.K.Harish	Assistant Professor	B.E (Mechanical)	M.B.A (Business Administration)	-	08-05-1996	1.5	-	-	01-12-2023	15600+AGP 5400
	7.	Mrs.R.Geetha	Assistant Professor	B.Sc (Maths)	M.B.A (Business Administration)	-	17-11-1997	1.5	-	-	01-12-2023	15600+AGP 5400
	8.	Mr.R.Radhakrishnan	Assistant Professor	B.A (Economics)	M.B.A (Business Administration)	-	09-07-1982	1.5	-	-	13-03-2024	15600+AGP 5400
	9.	Mrs.M.S.Rekha	Assistant Professor	B.E (CSE)	M.B.A (Business Administration)	-	26-04-1994	0.6	-	-	24-08-2024	15600+AGP 5400
	10.	Ms.S.H.Al Sumitha	Assistant Professor	B.B.A (Business Administration)	M.B.A (Business Administration)	-	13-12-1999	0.5	-	-	04-11-2024	15600+AGP 5400
	11.	Mr.P.Ananthan	Assistant Professor	B.A (Tourism)	M.B.A (Tourism)	-	21-05-1994	0.5	-	-	04-11-2024	15600+AGP 5400
	12.	Ms.H.Brintha F Gladi	Assistant Professor	B.B.A (Business Administration)	M.B.A (Business Administration)	-	13-08-2000	0.5	-	-	21-11-2024	15600+AGP 5400
Diploma in Civil Engineering	1.	Mrs.P.Puvanavathi	Lecturer	B.E Civil	M.E (Structural Engg.)	-	28-07-1991	-	-	-	01-08-2024	15600+AGP 3400
	2.	Ms.B.Aarthi Mary	Lecturer	B.E Civil	-	-	17-11-2002	-	-	-	04-11-2024	15600+AGP 3400
	3.	Mrs.K.Priyadharshini	Lecturer	B.E (Mech.)	-	-	11-08-2002	-	-	-	04-11-2024	15600+AGP 3400
	4.	Mr.S.Ahil	Lecturer	B.E (Mech.)	-	-	11-09-2001	-	-	-	04-11-2024	15600+AGP 3400

	5.	Mrs.R.Pavithra	Lecturer	B.A (English)	M.A (English)	-	02-04-1998	-	-	-	09-08-2024	15600+AGP 3400
	6.	Mrs.T.Santhakumari	Lecturer	B.A (Tamil)	M.A (Tamil)	-	20-05-1985	-	-	-	21-08-2024	15600+AGP 3400
	7.	Mr.J.Ajay	Lecturer	B.Sc (Physics)	M.Sc (Physics)	-	16-02-2001	-	-	-	02-08-2024	15600+AGP 3400
	8.	Mrs.R.Jency Mol	Lecturer	B.Sc (Physics)	M.Sc (Physics)	-	12-01-1998	-	-	-	03-07-2023	15600+AGP 3400
	9.	Mrs.S.Aji	Lecturer	B.Sc (Physics)	M.Sc (Physics)	-	13-06-1993	-	-	-	03-07-2023	15600+AGP 3400
	10.	Mrs.K.Dhanya	Lecturer	B.Sc (Chemistry)	M.Sc (Chemistry)	-	21-03-1989	-	-	-	01-08-2024	15600+AGP 3400
Diploma in Mechanical Engineering	1.	Mr.S.Pavish	Lecturer	B.E (Mech.)	-	-	27-05-1995	-	-	-	01-03-2024	15600+AGP 3400
	2.	Mr.C.Belwin	Lecturer	B.E (Mech.)	-	-	03-04-1994	-	-	-	02-09-2024	15600+AGP 3400
	3.	Mr.K.Inbasekaran	Instructor	B.E (Mech.)	-	-	30-07-1973	-	-	-	02-09-2024	15600+AGP 3400
	4.	Ms.M.Bhavana	Lecturer	B.E (Mech.)	-	-	16-06-2001	-	-	-	04-11-2024	15600+AGP 3400
	5.	Mr.F.H.Ashik Blessing	Lecturer	B.E (Mech.)	-	-	09-02-1996	-	-	-	04-11-2024	15600+AGP 3400
	6.	Ms.Keerthia Shri	Lecturer	B.E (Mech.)	-	-	06-08-2000	-	-	-	04-11-2024	15600+AGP 3400
	7.	Mr.P.Ranjith	Lecturer	B.E (Mech.)	-	-	21-10-1998	-	-	-	04-11-2024	15600+AGP 3400
	8.	Ms.A.Sowmya	Lecturer	B.E (Mech.)	-	-	11-04-2000	-	-	-	04-11-2024	15600+AGP 3400
	9.	Ms.S.Sangeetha	Lecturer	B.E (Mech.)	-	-	24-09-2001	-	-	-	04-11-2024	15600+AGP 3400
Diploma in Computer Science and Information Technology	1.	Ms.B.Punitha	Lecturer	B.E (CSE)	-	-	20-06-1990	-	-	-	04-11-2024	15600+AGP 3400
	2.	Mrs.M.Subhasri	Lecturer	B.E (CSE)	-	-	04-06-2000	-	-	-	04-11-2024	15600+AGP 3400
	3.	Mrs.A.Amala Aishwarya	Lecturer	B.E (CSE)	-	-	12-01-1996	-	-	-	04-11-2024	15600+AGP 3400

	4.	Mrs.S.Martinia Rulcelcia	Lecturer	B.E (CSE)	-	-	21-12-2002	-	-	-	04-11-2024	15600+AGP 3400
	5.	Mrs.J.Asha	Lecturer	B.E (CSE)	-	-	13-08-1993	-	-	-	04-11-2024	15600+AGP 3400
	6.	Mrs.E.Evelyn Juge	Lecturer	B.E (CSE)	-	-	16-09-1987	-	-	-	04-11-2024	15600+AGP 3400
	7.	Mrs.D.Judit Prince Seera	Lecturer	M.Sc (SW)	M.Tech (CS&IT)	-	11-02-1978	-	-	-	04-11-2024	15600+AGP 3400
	8.	Mrs.B.Aniska Mary	Lecturer	B.E (CSE)	-	-	25-04-1989	-	-	-	04-11-2024	15600+AGP 3400
Diploma in Electrical and Electronics Engineering	1.	Mr.K.Anantha Ruban	Lecturer	B.E (EEE)	-	-	17-06-1993	-	-	-	01-03-2024	15600+AGP 3400
	2.	Mr.K.Vaishakh	Lecturer	B.E (EEE)	-	-	30-07-2000	-	-	-	02-09-2024	15600+AGP 3400
	3.	Ms.L.Ancy Lazar	Lecturer	B.Sc (Mathematics)	M.Sc (Mathematics)	-	22-07-1999		-	-	22-07-2024	15600+AGP 3400
	4.	Mrs.K.Jeslin Saji	Lecturer	B.Sc (Mathematics)	M.Sc (Mathematics)	-	15-10-2000		-	-	04-11-2024	15600+AGP 3400
	5.	Mrs.J.Shalini	Lecturer	B.A (Tamil)	M.A (Tamil)	-	23-03-1987		-	-	04-11-2024	15600+AGP 3400
	6.	Mrs.S.Shajitha Rani	Lecturer	B.A (English)	M.A (English)	-	21-04-1987		-	-	04-11-2024	15600+AGP 3400
	7.	Mrs.J.Mary Catherin Saji	Lecturer	B.A (Tamil)	M.A (Tamil)	-	11-03-1984		-	-	04-11-2024	15600+AGP 3400
	8.	Mrs.A.N.Nishma	Lecturer	B.Sc (Mathematics)	M.Sc (Mathematics)	-	02-10-1999		-	-	04-11-2024	15600+AGP 3400